



NX-588E USB Single Program Flash Tool Instructions

I-NX588E-PH1
Rev A November 2005

General Description

The NX-588E USB Flash Programmer is a microcontrolled device with the capability to:

- o Store one copy of the firmware for all NetworX V2 control panels within its own non-volatile memory. This firmware is loaded onto the NX-588E via NXProg.exe, which is supplied with the NX-588E. The firmware can be loaded to an existing panel while installed, with or without a computer.

System Requirements

- o Computer running NXProg.exe with available USB port
- o Microsoft Windows® 2000 or Windows® XP
- o NX-588E Flash programmer module
- o Any applicable NX control panel

Operations

A. Writing Firmware From the Computer to the NX-588E

- ✍ First Use: Install the NX-588E drivers and NXProg application contained on the CD provided with the product. Refer to the screen shots on the right for the hardware installation.

The NX-588E will store one copy of the firmware for the NetworX V2 control panels within its own non-volatile memory.

1. Connect NX-588E to USB port.
2. Double click on shortcut to NXProg.exe
If the NX-588E is not connected before Step 2, the application must be closed and restarted to work properly.
3. The application will automatically search and select the COMM port where the NX-588E is installed.
4. Select **OPEN FILE**, and browse to file desired.
5. Select **TRANSFER FILE**.
6. LED (DS7) on the NX-588E will flash slowly--approx once per second (see diagram on pg 2). The NXProg application will indicate success or failure in a statement above the progress bar.
7. When finished, remove NX-588E from computer.

Figure 1. Screen shot of NXProg application

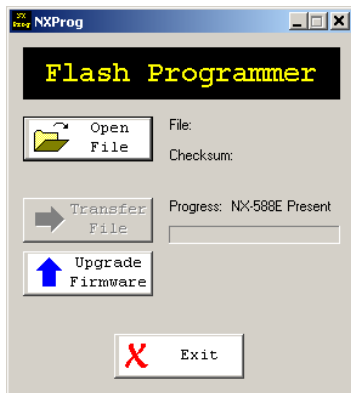
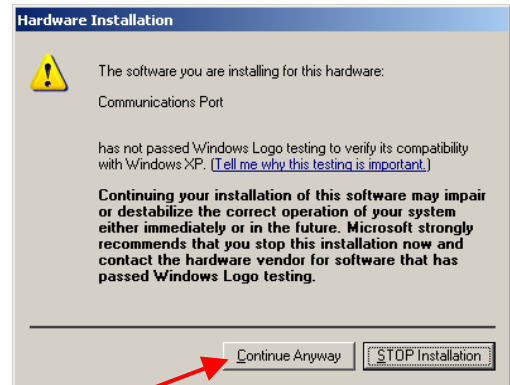
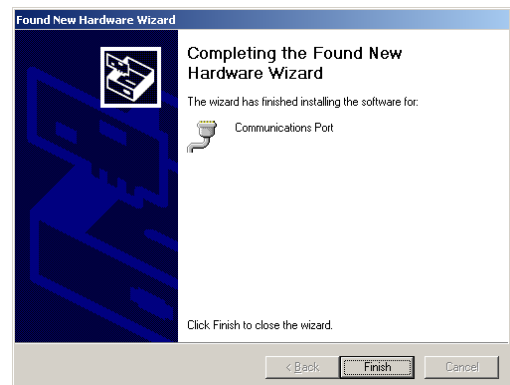
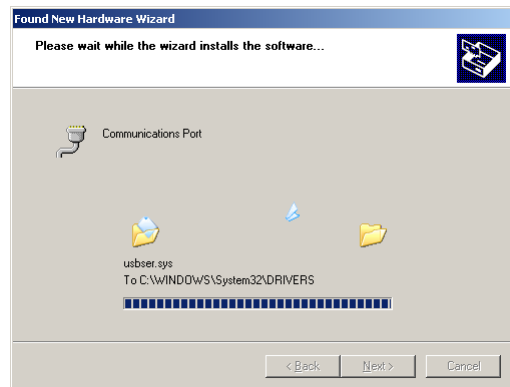



Figure 2. Screen shots while installing NX-588E drivers



Select "Continue Anyway"




B. Writing Firmware From the NX-588E Connected to a Computer to a Control Panel

 First Use: Install the NX-588E drivers and NXProg application contained on the CD provided with the product.

The NX-588E will store one copy of the firmware for the NetworX V2 control panels within its own non-volatile memory.

1. Complete steps 1-6 from Section A.
2. Attach the 5-pin cable of the NX-588E to the PROGRAM connector of the control panel (see diagram).
3. If the panel is not already powered up, connect to AC (not battery only) before starting the flash process.
4. Select upgrade firmware.
5. LED (DS7) will flash, indicating that writing is in progress.
6. LED (DS7) will become solid when upgrade is complete. It will flash fast (approx 3 per second) if the upgrade fails.
7. When finished, remove NX-588E from computer and the control panel.

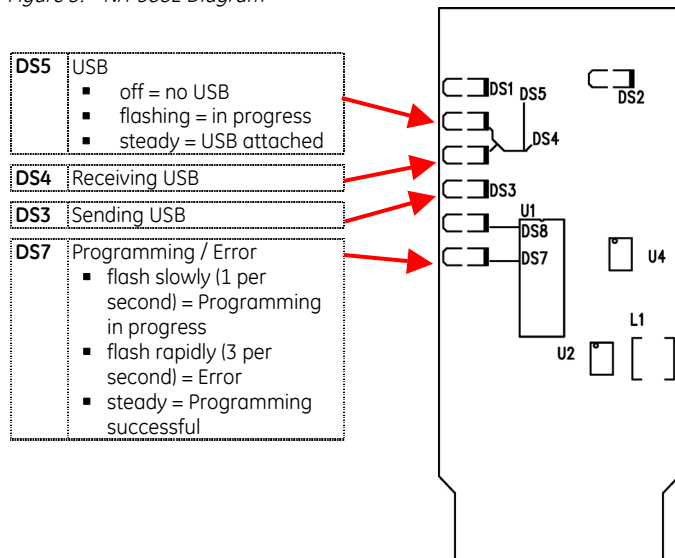
C. Writing Firmware From the NX-588E to a Control Panel

 First Use: Install the NX-588E drivers and NXProg application contained on the CD provided with the product.

The NX-588E will store one copy of the firmware for the NetworX V2 control panels within its own non-volatile memory.

1. Complete steps 1-7 from Section A.
2. Attach the 5-pin cable of the NX-588E to the PROGRAM connector of the control panel.
3. If the panel is not already powered up, connect to AC (not battery only).
4. LED (DS7) on the NX-588E will flash slowly (approx 1 per second).
5. LED (DS7) will become solid when upgrade is complete. It will flash fast (approx 3 per second) if the upgrade fails.

Figure 3. NX-588E Diagram



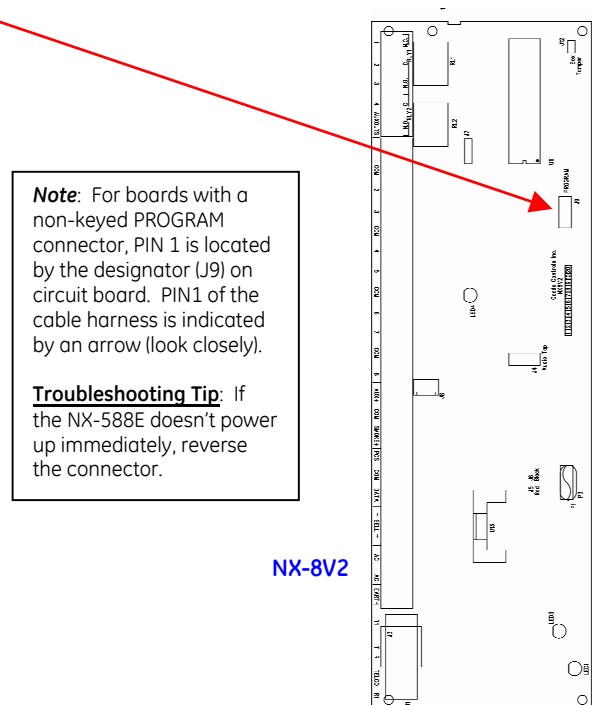
TROUBLESHOOTING

The NXProg application will provide failure messages when errors occur during an upgrade. The messages are formatted as: "Fail: xxxx", where "xxxx" is the failure text shown in the chart below. Example: "Fail: Connect (OP)".

Failure Text	Description
Connect (OP)	Could not open USB comport. Make sure the NX-588E is connected and drivers are installed properly before starting NXProg.
Connect (IP)	Comport associate with USB is Invalid. Make sure the NX-588E is connected and drivers are installed properly before starting NXProg.
Version?...	Version of NX-588E is not compatible with version of NXProg. Upgrade NXProg and/or NX-588E firmware.
* Connect (SP)	Could not initiate programming with NX-588E.
* Transfer (PM)	Error in transfer of Program Memory.
* Transfer (ID)	Error in transfer of ID Memory.
* Transfer (EE)	Error in transfer of EEPROM Memory.
* Transfer (CL)	Error in transfer of Configuration Memory.
* Verify (PM)	Error in verifying transfer of Program Memory.
* Verify (ID)	Error in verifying transfer of ID Memory.
* Verify (EE)	Error in verifying transfer of EEPROM Memory.
* Verify (CL)	Error in verifying transfer of Configuration Memory.
* Disconnecting...	Error disconnecting from NX-588E.
Connect (GMV)	NX-588E Memory Map Version not compatible. Upgrade NXProg and/or NX-588E firmware.
Connect (GID)	Not connected to an NX-588E.
Connect (GFV)	NX-588E Firmware Version not compatible. Upgrade NXProg and/or NX-588E firmware.
* Flash (SF)	Could not start the Update Firmware process.
Cancelled	Updating cancelled.
Flash (01)	Trying to flash an unknown chip. Connected to correct product?
Flash (02)	Trying to flash a different chip. Connected to correct product?
* Flash (03)	Flash Program Memory Invalid.
* Flash (04)	Flash ID Memory Invalid.
* Flash (05)	Flash Configuration Memory Invalid.
* Flash (06)	Verifying Flash Failed: Bad Checksum.
Flash (07)	NX-588E does not have a complete file loaded. Reload file.
Flash (08)	Trying to update firmware of unknown product.

(* Call Tech Support for assistance with this error.

Figure 4. Example of PROGRAM connector on NX-8V2 panel:



Note: For boards with a non-keyed PROGRAM connector, PIN 1 is located by the designator (J9) on circuit board. PIN1 of the cable harness is indicated by an arrow (look closely).

Troubleshooting Tip: If the NX-588E doesn't power up immediately, reverse the connector.

NX-8V2